



Your Distributor

Australia

WVR International Pty. LTD
Level 1, Unit 1a/60 Enterprise Place
Tingalpa
QLD 4173 Australia
Tel.: 1300 727 696
Email: sales.au@vwr.com

Austria

WVR International GmbH
Graumannsgasse 7
1150 Vienna
Tel.: +43 1 97 002 0
Email: info.at@vwr.com

Belgium

WVR International bvba
Researchpark Haasrode 2020
Geldenaaksebaan 464
3001 Leuven
Tel.: 016 385 011
Email: vwr.be@vwr.com

China

WVR International China Co., Ltd
Shanghai Branch
Room 256, No. 3058 Pusan Road
Pudong New District
Shanghai 200123
Tel.: +86-21-5858 8888
Fax: +86-21-5855 8601
Email: info_china@vwr.com

Czech Republic

WVR International s. r. o.
Veetee Business Park
Pražská 442
CZ - 281 67 Stříbrná Skalce
Tel.: +420 321 570 321
Email: info.cz@vwr.com

Denmark

WVR - Bie & Berntsen
Transformervej 8
2730 Herlev
Tel.: 43 86 87 88
Email: info.dk@vwr.com

Finland

WVR International Oy
Valimotie 9
00380 Helsinki
Tel.: 09 80 45 51
Email: info.fi@vwr.com

France

WVR International S.A.S.
Le Périgares – Bâtiment B
201, rue Carnot
94126 Fontenay-sous-Bois cedex
Tel.: 0 825 02 30 30 (0,18 EUR TTC/min)
Email: info@fr.vwr.com

Germany

WVR International GmbH
Hilpertsstraße 20a
D - 64295 Darmstadt
Freecall: 0800 702 00 07
Email: info.de@vwr.com

Hungary

WVR International Kft.
Simon László u. 4.
4034 Debrecen
Tel.: (52) 521-130
Email: info.hu@vwr.com

India

WVR Lab Products Private Limited
No.139, BDA Industrial Suburb,
6th Main, Tumkur Road, Peenya Post,
Bangalore, India - 560058
Tel.: +91-80-28078400
Email: vwr_india@vwr.com

Ireland / Northern Ireland

WVR International Ltd / WVR International
(Northern Ireland) Ltd
Orion Business Campus
Northwest Business Park
Ballycoolin
Dublin 15
Tel.: 01 86 22 222
Email sales.ie@vwr.com

Italy

WVR International S.r.l.
Via San Giusto 85
20153 Milano (MI)
Tel.: 02-3320311
Email: info.it@vwr.com

The Netherlands

WVR International B.V.
Postbus 8198
1005 AD Amsterdam
Tel.: 020 4808 400
Email: info.nl@vwr.com

New Zealand

WVR International LP
241 Bush Road
Albany 0632, Auckland
Tel.: 0800 734 100
Email: sales@globalscience.co.nz

Norway

WVR International AS
Haavard Martinsens vei 30
0978 Oslo
Tel.: 02290
Email: info.no@vwr.com

Poland

WVR International Sp. z o.o.
Limbowa 5
80-175 Gdansk
Tel.: 058 32 38 200
Email: info.pl@vwr.com

Portugal

WVR International -
Material de Laboratório, Lda
Edifício Neopark
Av. Tomás Ribeiro, 43- 3 D
2790-221 Carnaxide
Tel.: 21 3600 770
Email: info.pt@vwr.com

Singapore

WVR Singapore Pte Ltd
18 Gul Drive
Singapore 629468
Tel.: +65 6505 0760
Email: sales.sg@vwr.com

Spain

WVR International Eurolab S.L.
C/ Tecnologia 5-17
A-7 Llinars Park
08450 - Llinars del Vallès
Barcelona
Tel.: 902 222 897
Email: info.es@vwr.com

Sweden

WVR International AB
Fagerstagatan 18a
163 94 Stockholm
Tel.: 08 621 34 00
Email: info.se@vwr.com

Switzerland

WVR International AG
Lerzenstrasse 16/18
8953 Dietikon
Tel.: 044 745 13 13
Email: info.ch@vwr.com

Turkey

WVR International Laboratuvar Teknolojileri
Ltd.Şti.
Orta Mah. Cemal Gürsel Caddesi
Ördekcioglu İşmerkezi No.32/1
34896 Pendik - Istanbul
Tel.: +90 216 598 2900
Email: info.tr@vwr.com

UK

WVR International Ltd
Customer Service Centre
Hunter Boulevard
Magna Park
Lutterworth
Leicestershire
LE17 4XN
Tel.: 0800 22 33 44
Email: uksales@vwr.com



Recalibratable high precision thermometer
For Pt100 4-wire temperature probes

as of version 1.6

Operating Manual

TD 121

European Catalogue Number(s):

Euro Plug: 620-1932

Issued: 01.04.2013



WEEE-Reg.-Nr. DE 93889386

1	IN GENERAL	2
1.1	SAFETY INSTRUCTIONS	2
1.2	OPERATING AND MAINTENANCE	3
1.3	CONNECTIONS	3
1.4	DISPLAY ELEMENTS	3
1.5	PUSHBUTTONS	3
2	DEVICE CONFIGURATION	4
2.1	'UNIT': SELECTION OF TEMPERATURE UNIT °C /°F	4
2.2	'RESOLUTION': THE DISPLAY RESOLUTION	4
2.3	'OFFSET': ZERO DISPLACEMENT	4
2.4	'SCAL': SCALE CORRECTION	4
2.5	'POWER OFF': SELECTION OF POWER-OFF DELAY	4
2.6	'OUT': FUNCTION OF THE OUTPUT	4
2.7	'ADDRESS': SELECTION OF BASE ADDRESS WHEN OUTPUT = SERIAL INTERFACE	4
2.8	'DAC.0VOLT': OUTPUT OFFSET WHEN OUTPUT = ANALOGUE OUTPUT	4
2.9	'DAC.1VOLT': OUTPUT SCALE WHEN OUTPUT = ANALOGUE OUTPUT	4
3	SOME BASICS OF PRECISION TEMPERATURE MEASURING	5
4	SPECIAL FUNCTIONS	6
4.1	DISPLAY RESOLUTION	6
4.2	ZERO DISPLACEMENT ('OFFSET')	6
4.3	SCALE CORRECTION ('SCALE')	6
4.4	OUTPUT	6
4.4.1	Analogue Output – Scaling with DAC.0 and DAC.1	6
5	FAULT AND SYSTEM MESSAGES	7
6	PROBE PIN ASSIGNMENT	7
7	CALIBRATION SERVICES	7
8	SPECIFICATION	8
9	TECHNICAL SERVICE	9
10	WARRANTY	9
11	EQUIPMENT DISPOSAL	9

1 In General

1.1 Safety Instructions

This device has been designed and tested in accordance to the safety regulations for electronic devices. However, its trouble-free operation and reliability cannot be guaranteed unless the standard safety measures and special safety advises given in this manual will be adhered to when using it.

- Trouble-free operation and reliability of the device can only be guaranteed if it is not subjected to any other climatic conditions than those stated under "Specification".
- Transporting the device from a cold to a warm environment condensation may result in a failure of the function. In such a case make sure the device temperature has adjusted to the ambient temperature before trying a new start-up.
- The circuitry has to be designed most carefully if the device should be connected to other devices. Internal connection in third party devices (e.g. connection GND and earth) may result in not-permissible voltages impairing or destroying the device or another device connected.
- Warning:** Operating the device with a defective mains power supply (e.g. short circuit from mains voltage to output voltage) may result in hazardous voltages at the device (e.g. at sensor socket)
- Whenever there may be a risk whatsoever involved in running it, the device has to be switched off immediately and to be marked accordingly to avoid re-starting. Operator safety may be a risk if:
 - there is visible damage to the device
 - the device is not working as specified
 - the device has been stored under unsuitable conditions for a longer time
 In case of doubt, please return device to manufacturer for repair or maintenance.
- Warning:** Do not use these product as safety or emergency stop device, or in any other application where failure of the product could result in personal injury or material damage.
Failure to comply with these instructions could result in death or serious injury and material damage.

1.2 Operating And Maintenance

Battery Operation

The battery has been used up and needs to be replaced, if „bAt“ are shown in lower display. The device will, however, continue operating correctly for a certain time.
The battery has been completely used up, if 'bAt' is shown in the upper display.
The battery has to be taken out, when storing device above 50°C.

Hint: We recommend to remove the battery if device is not used for a longer period of time!

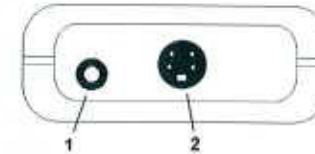
Mains Operation

Attention: When using a power supply unit please note that operating voltage has to be 10.5 to 12 V DC. Do not apply overvoltage!! Simple 12V-power supplies often have excessive no-load voltage. We, therefore, recommend using regulated voltage power supplies. Trouble-free operation is guaranteed by our power supply PS 100.

Prior to connecting the plug power supply with the mains supply make sure that the operating voltage stated at the power supply is identical to the mains voltage.

- Treat device and probes carefully. Use only in accordance with above specification. (do not throw, hit against etc.). Protect plugs and sockets from soiling.
- To disconnect sensor plug do not pull at the cable but at the plug.
- When connecting the probe the plug will slide in smoothly if plug is entered correctly.
- Selection of Output-Mode:** The output can be used as serial interface or as analogue output. This choice has to be done in the configuration menu.

1.3 Connections



- Output:** Operation as interface: Connect to optically isolated interface adapter, Operation as analogue output: Connection via suitable cable.
Attention: The output mode has to be configured (p.r.t 2.7) and influences battery life!
- Probe connection** Pt100 4-wire
- The **mains socket** is located at the left side of the instrument

1.4 Display Elements



- 1 = Main Display:** Currently measured temperature
- 2 = Auxiliary Display:** Display of min, max or hold values

Special display elements:

- 3 = Corr-arrow:** indicates that correction factor is activated
- 4 = Offset-arrow:** indicates that zero point offset (offset) is activated
- 5 = Min/Max/Hold:** shows if a min., max. or hold value is displayed in the secondary display

1.5 Pushbuttons



- key 1: On/Off key
key 4: Set/Menu

keys 2, 5:

press (Menu) for 2 sec.: configuration will be activated
min/max when taking measurements:
press shortly: min. or max. measuring value will be displayed
press for 2 sec.: the min. or max. value will be deleted

key 6:

up/down for configuration:
to enter values or change settings
Store/Quit:

key 3:

- Measurement: Hold current measuring value ('HLD' in display)
- Menu: Acknowledge setting, return to measuring
no function

2 Device Configuration

For configuration of the device press "Menu"-key (key 4) for 2 seconds, the first menu will be shown. Choose between the individual values that can be set by pressing the "Menu"-key (key 4) again. The individual values are changed by pressing the keys "▲" (key 2) or "▼" (key 5). Use key "Quit" (key 6) to leave configuration and to store settings.

2.1 'Unit': Selection of Temperature Unit °C /°F

	°C:	All temperature values are in degrees Celsius
	°F:	All temperature values are in degrees Fahrenheit

2.2 'Resolution': The Display Resolution

	0.1°:	Resolution 0.1°C
	0.01°:	Resolution 0.01°C
	Auto:	Resolution is selected automatically

2.3 'Offset': Zero Displacement

	-2.50°C...2.50°C respectively -4.50°F...4.50°F	The zero point of the measurement will be displaced by this value to compensate for deviations in the temperature probe or in the measuring device
	oFF:	Zero displacement inactive (=0.0°)

2.4 'Scal': Scale Correction

	-2.000...2.000:	The scale of the measuring will be changed by this factor to compensate for deviations in the temperature probe or in the measuring device (factor is in %)
	oFF:	Scale correction factor inactive (=0.000)

2.5 'Power.off': Selection of Power-Off Delay

	1...120:	Power-off delay in minutes. Device will be automatically switched off as soon as this time has elapsed if no key is pressed/no interface communication takes place
	oFF:	Power-off function inactive (continuous operation, e.g. mains operation)

2.6 'Out': Function of the Output

	OFF:	No output function, lowest power consumption
	SEr:	Output is serial interface
	dAC:	Output is analogue output 0...1V

2.7 'Address': Selection of Base Address when Output = Serial Interface

	01, 11, 21, ..., 91:	Base address of device for interface communication.
--	----------------------	---

2.8 'dAC.0Volt': Output Offset When Output = Analogue Output

	-200.0...850.0°C respectively -328.0...1562.0°F	Enter desired temperature value at which the analogue output potential should be 0V
--	---	---

2.9 'dAC.1Volt': Output Scale When Output = Analogue Output

	-200.0...850.0°C respectively -328.0...1562.0°F	Enter desired temperature value at which the analogue output potential should be 1V
--	---	---

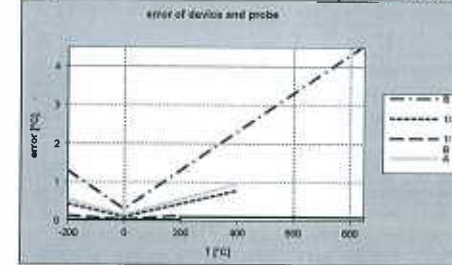
Hint: The settings will be set to the settings ex works, if keys 'Set' and 'Store' are pressed simultaneously for more than 2 seconds.

3 Some Basics Of Precision Temperature Measuring

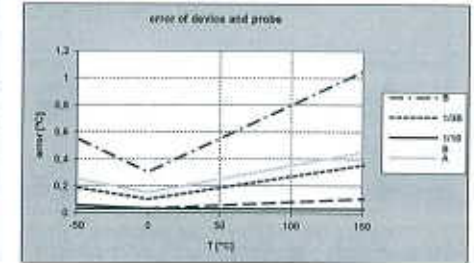
• Probe Precision/Device Precision

The device is very precise (please refer to technical data). To be able to use this high precision, the connected temperature probe has to be as precise as possible, too. The following precision classes are available as a standard at reasonable prices (Platinum resistor thermometers according to EN60751):

Class	Error ranges
B	$\pm (0,3 + 0,005 \cdot \text{temperature})$
1/3 B (=1/3 DIN)	$\pm (0,1 + 0,0017 \text{temperature})$
1/10 B (=1/10 DIN)	$\pm (0,03 + 0,0005 \cdot \text{temperature})$
A	$\pm (0,15 + 0,002 \cdot \text{temperature})$



Error over measuring range



Error over range -50...150°C

For applications demanding higher precision than given by this classes we suggest to adjust the device to the used probe or to get a calibration certificate for the device combined with the probe.

Attention: if an adjusted or calibrated probe is replaced, also the adjustment or calibration certificate has to be renewed to maintain the referring overall precision!

Be careful when buying third party temperature probes: Besides the standard EN60751 there are some other obsolete or unusual standards on the market.

• 4-Wire-Measuring

When using resistance thermometers as the Pt100 a quite large measuring error can be caused by inadequate cables and connections. Using 4wire measuring avoids this kinds of errors mainly caused by unwanted resistances. It is suggested to use suitable probes and extensions only. (For pin assignment please refer to chapter 6)

• Heat loss caused by probe construction:

Especially when measuring temperatures which deviate very much from the ambient temperature, measuring errors often occur if the heat loss caused by the probe is not considered. When measuring fluids therefore the probe should be emerged sufficiently deep and be stirred continuously. When measuring gases the probe should also emerge as deep as possible in the gas to be measured (e.g. when measuring in channel/pipes) and the gas should flow around the probe at sufficient flow.

• Measuring Surface Temperature

If temperature of the surface of an object has to be measured, one should pay attention especially when measuring hot (or very cold) surfaces, that the ambient air cools (or heats) the surface. Additionally the object will be cooled (or heated) by the probe or the probe can have a better heat flow to the ambient temperature as to the objects surface. Therefore specially designed surface probes should be used. The measuring precision depends mainly on the construction of the probe and of the physics of the surface itself. If choosing a probe try to choose one with low mass and heat flow from sensor to handle. Thermally conductive paste can increase the precision in some cases.

• Allowable temperature Range Of Probes

Pt100 Sensors are defined over a wide temperature range. Depending on probe materials and sort of sensor (e.g. hybrid sensors, wire wound resistors...) the allowable temperature ranges have to be considered. Exceeding the ranges at least causes a wrong measuring, it may even damage the probe permanently! Often it also has to be considered, that the temperature range is just valid for the probe tube, (plastic-) handles can't stand the same high temperatures. Therefore the tube length should be selected long enough, that temperature keeps low at the handle.

• Self Heating

The measuring current of the instrument is just 0.3mA. Because of this comparably low current practically now self heating effect has to be considered, even at air with low movement the self heating is $\leq 0,01^\circ\text{C}$.

• Cooling by Evaporation

When measuring air temperature the probe has to be dry. Otherwise the cold due to the evaporation causes too low measurements.

4 Special Functions

4.1 Display Resolution

Standard setting: 'Auto', i.e. the device automatically switches over to the optimum resolution between .01° and 0.01°.

If temperatures to be measured are near the switching threshold, a fixed resolution may be better, e.g. for easy recording. In such a case please select the optimum resolution manually.

4.2 Zero Displacement ('Offset')

A zero displacement can be carried out for the measured temperature:

$$\text{temperature displayed} = \text{temperature measured} - \text{offset}$$

Standard setting: 'off' = 0.0°, i.e. no zero displacement will be carried out. Together with the scale correction (see below) this factor is mainly used to compensate for sensor deviations. Unless the factor is set to 'off', the offset arrow in the display shows an active zero displacement.

4.3 Scale Correction ('Scale')

The scale of the measuring can be influenced by this setting (factor is in %):

$$\text{displayed temperature}[^{\circ}\text{C}] = \text{measured temperature}[^{\circ}\text{C}] * (1 + \text{Scal}/100)$$

$$\text{respectively displayed temperature}[^{\circ}\text{F}] = (\text{measured temperature}[^{\circ}\text{F}] - 32^{\circ}\text{F}) * (1 + \text{Scal}/100) + 32^{\circ}\text{F}$$

Standard setting: 'off' = 0.000, i.e. temperature is not corrected. Together with the zero displacement (see above) this factor is mainly used to compensate for sensor deviations.

Unless the factor is set to 'off', the Corr arrow in the display shows an active scale correction.

4.4 Output

By using an electrically isolated interface converter the device can be connected to a PC.

The output can be used as serial interface or as analogue output (0-1V). If none of both is needed, we suggest to switch the output off, because battery life then is extended.

4.4.1 Analogue Output – Scaling with DAC.0 and DAC.1

With the DAC.0 and DAC.1 values the output can be rapidly scaled to Your efforts.

Keep in mind not to connect low-resistive loads to the output, otherwise the output value will be wrong and battery life is decreased. Loads above ca 10kOhm are uncritical.

If the display exceeds the value set by DAC.1, then the device will apply 1V to the output

If the display falls below the value set by DAC.0, then the device will apply 0V to the output

In case of an error (Err.1, Err.2, no sensor, etc.) the device will apply slightly above 1V to the output.

plug wiring::



Attention!

The 3rd contact has to be left floating!
Only stereo plugs are allowed!

5 Fault and System Messages

Display	Meaning	Remedy
	low battery voltage, device will continue to work for a short time If mains operation: wrong voltage	replace battery replace power supply, if fault continues to exist: device damaged
	low battery voltage If mains operation: wrong voltage	replace battery Check/replace power supply, if fault continues to exist: device damaged
No display or weird display	low battery voltage If mains operation: wrong voltage	replace battery Check/replace power supply, if fault continues to exist: device damaged
Device does not react on keypress	system error device defective	Disconnect battery or power supply, wait some time, re-connect return to manufacturer for repair
----	Sensor error: no sensor connected sensor/cable or device defective	Connect sensor to socket return to manufacturer for repair
Err.1	Value exceeding measuring range Wrong probe connected sensor/cable defective	Check: Is the value exceeding the measuring range specified? -> temperature too high! Check probe -> replace
Err.2	Value below display range Wrong probe connected sensor/cable defective	Check: Is the value below the measuring range specified? -> temperature too low! Check probe -> replace
Err.3	Value exceeding display range	-> set resolution to 0.1° or Auto
Err.4	Value below display range	-> set resolution to 0.1° or Auto
Err.7	system error	return to manufacturer for repair

6 Probe pin assignment

The device is constructed for the connection of a Pt100 4-wire probe. The connection is carried out as follows:

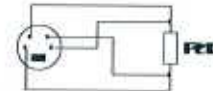
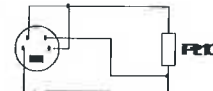
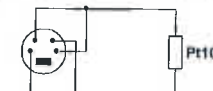


figure shows view upon probe jack pins

It is also possible to connect an 3- or 2-wire probe to the device. Please observe that in consequence of the cable resistance a increased measuring fault will occur. The connection of this probes should be carried out as follows:



3-wire connection



2-wire connection

7 Calibration Services

Calibration certificates can be issued by the factory. For this the device has to be sent to the manufacturer. Just the manufacturer can check the factory settings and correct them if necessary.

8 Specification

Supported probes	Pt100 4-wire (2-wire possible)			
Sensor Curve	according to EN60751			
Probe connection	4pole Mini-DIN socket			
Resolution	0.01°C respectively 0.1°C, 0.01°F respectively 0.1°F			
Measuring Ranges	0.01°C -199.99... +199.99°C	0.1°C -200.0... +850.0°C	0.01°F -199.99... +199.99°F	0.1°F -328.0... +1562.0°F
Precision	Device without probe ±1Digit (at nominal temperature) Range 0.01°C/F Range 0.1°C/F ±0.03°C / 0.06°F ±0.1°C / ±0.2°F			
Measuring	4-wire measuring with automatic compensation of thermovoltage errors, measuring current ca. 0.3mA			
Temperature drift	<=0,002K per 1K			
Nominal temperature	25°C			
Ambient	Temperature -25 ... +50°C (-13 .. 122°F) rel. humidity 0 ... 95%r.F. (not condensing)			
Storage temperature	-25 ... +50°C (-13 ... 122°F)			
Housing	Dimensions: 142 x 71 x 26 mm (L x W x D) impact-resistant ABS plastic housing, membrane keyboard, transparent panel. Front side IP65,integrated pop-up clip for table top or suspended use.			
Weight	approx. 155 g			
Output:	3.5mm audio plug, stereo Selectable as serial Interface: via optically isolated interface adapter or analogue output: 0..1V, freely scaleable (resolution 13bit, accuracy 0,05% at nominal temperature, cap. load <1nF)			
Power Supply	9V-Battery, type IEC 6F22 (included) as well as additional d.c. connector (diameter of internal pin 1.9 mm) for external 10,5-12V direct voltage supply. (suitable power supply: PS 100)			
Power Consumption	output off	ca. 0.90mA		
	output serial interface:	ca. 1.15mA		
	analogue output:	ca. 1.25mA		
Display	Two 4 ½ digits LCD's (12.4mm high and 7 mm high) for temperature, min./ max values, hold function, etc. as well as additional pointing arrows.			
Pushbuttons	6 membrane keys for on/off switch, menu operation, min. and max. value memory, hold-function etc.			
Min-/Max-Value Memory	Both the max. and the min. value will be memorised.			
Hold Function	Press button to store current value.			
Automatic-Off-Function	Device will be automatically switched off if no key is pressed/no interface communication takes place for the time of the power-off delay. The power-off delay can be set to values between 1 and 120 min.; it can be completely deactivated.			
EMC:	The device corresponds to the essential protection ratings established in the Regulations of the Council for the Approximation of Legislation for the member countries regarding electromagnetic compatibility (2004/108/EG) EN61326 +A1 +A2 (Appendix B, class B), additional error: < 1% FS.			

9 Technical service

Web Resources

Visit the VWR website at vwr.com for:

- Complete technical service contact information
- Access to the VWR Online Catalogue, and information about accessories and related products
- Additional product information and special offers

Contact us For information or technical assistance contact your local VWR representative or visit vwr.com.

10 Warranty

VWR warrants that this product will be free from defects in material and workmanship for a period of two (2) years from date of delivery. If a defect is present, VWR will, at its option and cost, repair, replace, or refund the purchase price of this product to the customer, provided it is returned during the warranty period. This warranty does not apply if the product has been damaged by accident, abuse, misuse, or misapplication, or from ordinary wear and tear. If the required maintenance and inspection services are not performed according to the manuals and any local regulations, such warranty turns invalid, except to the extent, the defect of the product is not due to such non performance.

Items being returned must be insured by the customer against possible damage or loss. This warranty shall be limited to the aforementioned remedies. IT IS EXPRESSLY AGREED THAT THIS WARRANTY WILL BE IN LIEU OF ALL WARRANTIES OF FITNESS AND IN LIEU OF THE WARRANTY OF MERCHANTABILITY.

11 Equipment disposal



This equipment is marked with the crossed out wheeled bin symbol to indicate that this equipment must not be disposed of with unsorted waste.

Instead it's your responsibility to correctly dispose of your equipment at lifecycle -end by handling it over to an authorized facility for separate collection and recycling. It's also your responsibility to decontaminate the equipment in case of biological, chemical and/or radiological contamination, so as to protect from health hazards the persons involved in the disposal and recycling of the equipment.

For more information about where you can drop off your waste of equipment, please contact your local dealer from whom you originally purchased this equipment.

By doing so, you will help to conserve natural and environmental resources and you will ensure that your equipment is recycled in a manner that protects human health.

Thank you

**KALIBRIERZERTIFIKAT
CALIBRATION CERTIFICATE
CERTIFICAT DE CALIBRATION**



Gerät / Device / Modèle

TD 121

**Seriennummer
Serial Number
N° Série**

92404962

Messgröße

Meas. Unit

Unité de mesure

Temperatur

temperature

température

**Sollwert
reference
référence**

**Istwert
actual value
actuel**

**Toleranz
tolerance
tolérance**

-199,90 °C
0,01 °C
849,1 °C

-199,89 °C
0,01 °C
849,1 °C

± 0,03 °C ± 1 Digit
± 0,03 °C ± 1 Digit
± 0,1 °C ± 1 Digit

**Gerät optisch
Visual inspection
inspection visuelle**

OK



Datum / Date / Date

23-01-2017

Prüfer / Inspector / Verificateur

EN

VWR International Europe BVBA
Researchpark Haasrode 2020
Geldenaaksebaan 464
B-3001 Leuven